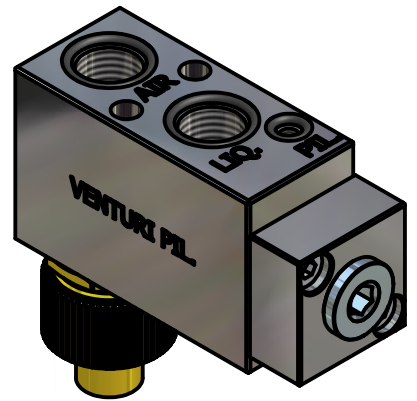
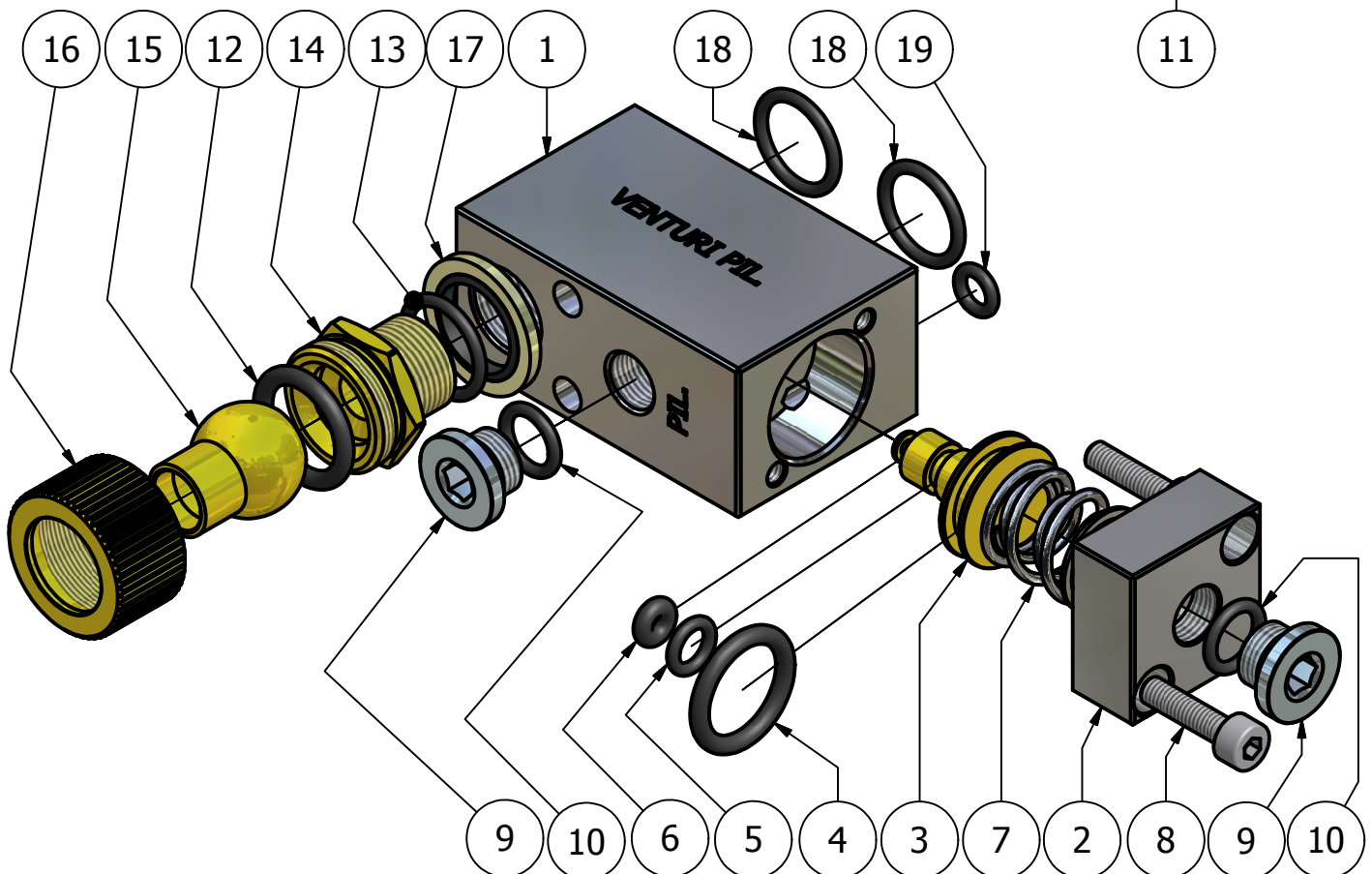
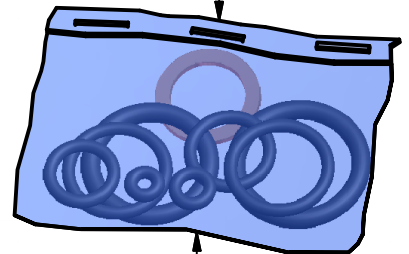


# MOD. VENTURI PIL. 16 BAR

DESCRIZIONE DESCRIPTION	COD.
1 Corpo - Body	B-SA2700-GR
2 Fondello - End cap	B-XFS0022
3 Pistone - Piston (4+5+6 inclusi-enclused)	B-XPI0006
4 O-Ring 13,95x2,62 (3056)	B-OR0009
5 O-Ring 4,48x1,78 (2018)	B-OR0008
6 O-Ring 2,06x2,62 <b>90 SHORE A</b>	B-OR0037
7 Molle - Springs ( $\varnothing$ 12 + $\varnothing$ 16)	B-MOL0003+B-MOL0005
8 Vite fondello - End cup screw (M4 x 16) (x2)	B-VIT0029
9 Tappo 1/8 - 1/8 male plug (x2)	B-TAP0006
10 O-Ring 8,73x1,78 (108) (x2)	B-OR0003
11 Kit O-Rings	B-XKI0024
12 O-Ring 13,1x2,62 (117)	B-OR0002
13 O-Ring 11,11x1,78 (114)	B-OR0017
14 Porta Jet (Nipplo) - Nozzle soached M14x1	B-XPJ0001
15 Jet M9	B-XJE0108
16 Ghiera porta Jet - Jet cap nut	B-GHI0002
17 Guarnizione/Seal 21,6x13,6x2	B-RON0006
18 O-Ring 12,42x1,78 (2050)	B-OR0005
19 O-Ring 4,47x1,78 (2018)	B-OR0004



Sostituire ogni 3 - 6 mesi  
Replace every 3 - 6 month



www.balossi.it - balossisrl@numerica.it